

Radial force measuring axle RFS[®] 150 E



with VA U-groove guide pulley - 90/70-17.5

(Illustration shows RFS[®]150)

- outer Ø 90mm, root Ø 70mm, running surface, 17.5mm wide, with flanges
- profile of the pulley: U-groove
- for journal Ø 10mm
- pulley surface: **V2A**, if necessary **nitrogen hardened**
- incl. easy running bearings with low friction
- weight of the pulley incl. bearings approx. 600g
- suitable for use on RFS[®] / RFS[®] E sensors
- option: roll holder
- HG dwg. 64_255_805

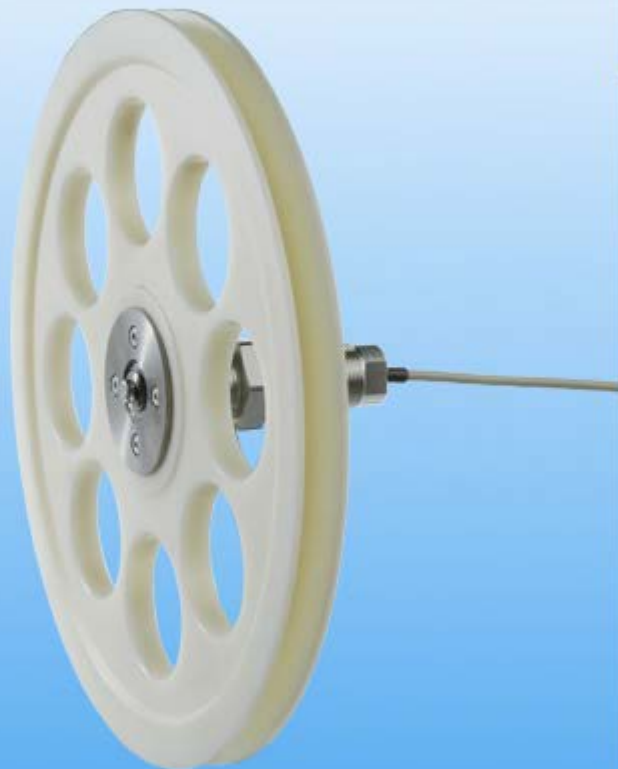
Radial force measuring axle RFS[®] 150 E

with PA6 rope pulley - 180/150-18.5

(Illustration shows RFS[®]150)

- outer Ø 180mm, root Ø 150mm, width 18.5mm
- profile of the roll: V-groove
- for journal Ø 10mm
- **pulley surface: untreated PA6**
- incl. easy running bearings with low friction and journal adaptor
- weight of the pulley incl. bearings approx. 500g
- suitable for use on RFS[®] / RFS[®] E sensors
- option: roll holder
- HG dwg. 621131





Radial force measuring axle RFS[®] 150 E

with PA6 rope pulley - 270/240-18

(Illustration shows RFS[®]150)

- outer Ø 270mm, root Ø 240mm, width 18mm
- profile of the pulley: V-groove
- for journal Ø 10mm
- **pulley surface: untreated PA6**
- incl. easy running bearings with low friction and journal adaptor
- weight of the pulley incl. bearings approx. 800g
- suitable for use on RFS[®] / RFS[®] E sensors
- option: roll holder
- HG dwg. K653345

Radial force measuring axle RFS[®] 150 E

with V-groove guide pulley - 168/150-13

(Illustration shows RFS[®]150)

- outer Ø 168mm, root Ø 150mm, width 13mm
- profile of the pulley: V-groove
- for journal Ø 10mm
- **pulley surface: untreated aluminium**
- incl. easy running bearings with low friction
- weight of the pulley incl. bearings approx. 180g
- suitable for use on RFS[®] / RFS[®] E sensors
- option: roll holder
- HG dwg. 64_255_782



Radial force measuring axle RFS[®] 150 E



with cylindrical aluminium guide roller - 86/80-80

(Illustration shows RFS[®]150)

- outer Ø 86mm, root Ø 80mm, width 80mm
- cylindrical running surface, 80 mm wide, with flanges
- for journal Ø 10mm
- **roller surface: untreated aluminium**
- incl. easy running bearings with low friction and journal adaptor
- weight of the roller incl. bearings approx. 250g
- suitable for use on RFS[®] / RFS[®] E sensors
- option: roll holder
- HG dwg. 600751

Radial force measuring axle RFS[®] 150 E

with aluminium guide roller - cylindrical 25/25-40
and winding protection

(Illustration shows RFS[®]150)



- Ø 25mm,
- cylindrical running surface, 40mm wide, without flanges
- for journal Ø 10mm
- **roller surface: untreated aluminium**
- incl. winding protection on fastening side
- incl. easy running bearings with low friction
- weight of the roll incl. bearings approx. 50g
- suitable for use on RFS[®] / RFS[®] E sensors
- option: roll holder
- HG dwg. K661436

Radial force measuring axle RFS[®] 150 E

with single side mounted idler pulley

(Illustration shows RFS[®]150)

- for narrow web materials
- available in different widths
- **hard coated**



Radial force measuring axle RFS[®] 150 E

Radial force sensor RFS[®] 150

- with special bearing journal

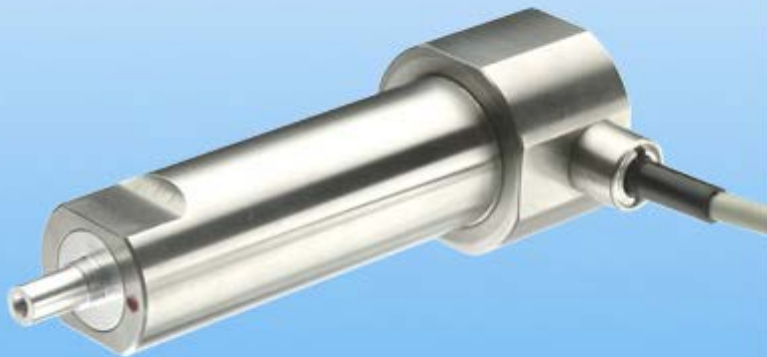


Radial force measuring axle RFS[®] 150 E

Illustration

here:

- RFS 150-E
- with option cylindrical sensor housing Ø 22 mm
- dimensions as per dwg. K651733



Radial force measuring axle RFS[®] 150 E

Ceramic pin with holder

- to be fitted on the bearing journal (8 mm) of RFS 150 sensors
- as per dwg. 611538



Radial force measuring axle RFS[®] 150 E

Various bearing journal adapters

- to adapt customer's pulleys on RFS 150 and RFS 150-E sensors
- custom-specific / application-specific design
- short-term delivery
- available for all RFS standard bearing journals Ø 5mm, 8mm and 10mm



Radial force measuring axle RFS[®] 150 E

Illustration

here:

3RTS-500

- width of supporting board 500mm
- double radius roller, aluminium finish: hard-coated
- with 2 additional guide rollers
- HG dwg. 64_254_339

Radial force measuring axle RFS[®] 150 E

Illustration

here:

3RTS-500

- width of supporting board 500mm
- double radius roller, aluminium
finish: hard-coated
- with 2 additional guide rollers
- HG dwg. 64_254_339